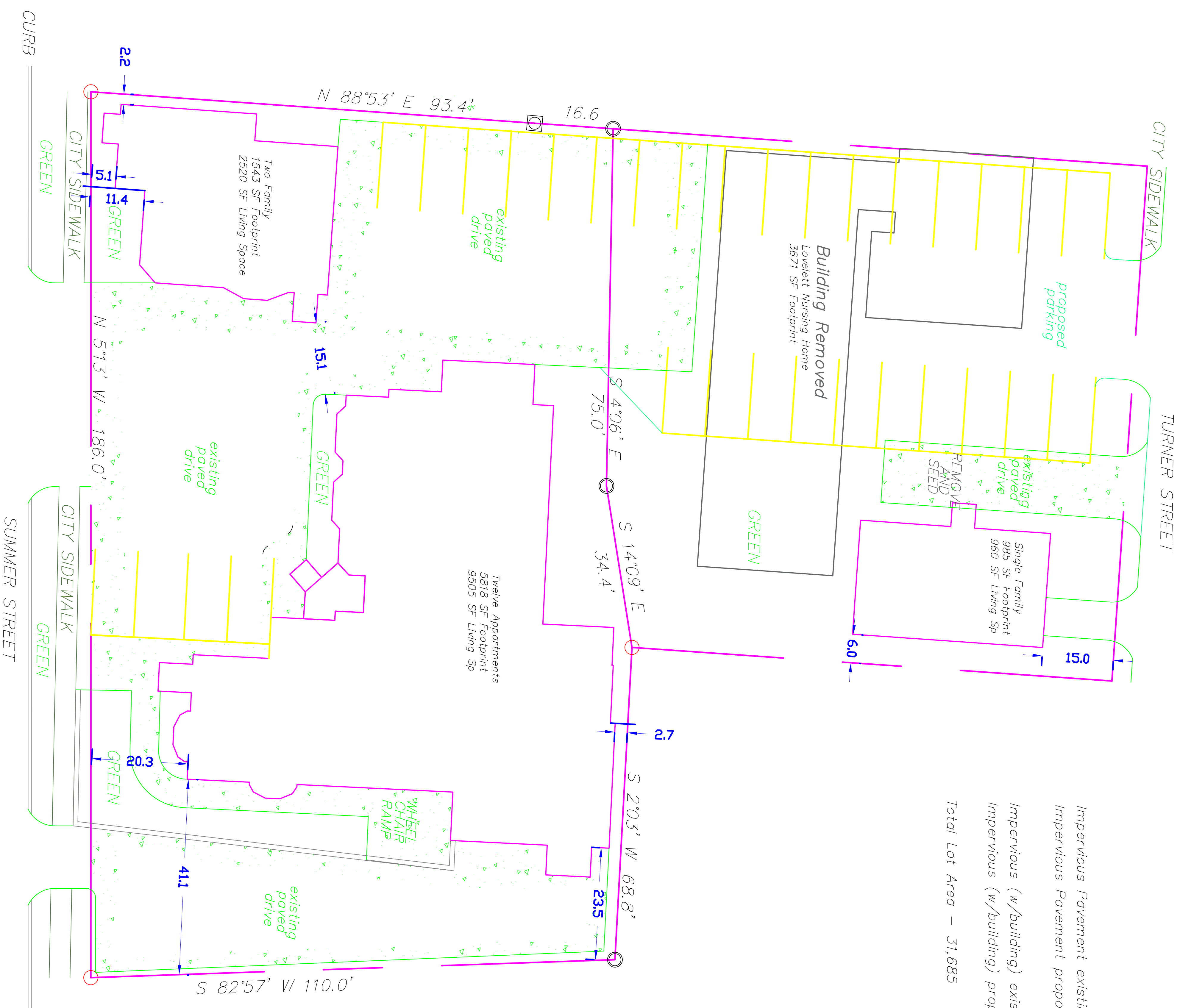


Impervious Pavement existing - 11,381 SF  
 Impervious Pavement proposed - 16,228 SF  
 Impervious (w/building) existing - 23,398 SF  
 Impervious (w/building) proposed - 24,574 SF  
 Total Lot Area - 31,685



- Iron Pin (3/8" Rebar—Set 11-14-85)
- Iron Pipe or Pin (As Found)
- ⊗ Stone Monument (As Found)

REV.	DESCRIPTION	DATE	REV.	BY

**Station Class Constructors**  
 601 Washington Street N.  
 Auburn Maine 04210  
 Tel: (207) 784-2000  
 Fax: (207) 784-2000  
 www.stationclass.com

Designed by	Checked by	Approved by - date	Filename	Date	Scale
ADL	CLL		LValley Properties 185 Summer Street Auburn ME 04210	July 28, 2019	N.T.S.
			Proposed Site Plan Auburn Residential Care Apartments Site Plan		
				Edition 1	Sheet 10F-1